

The 12 month component collects unduplicated student enrollment counts. The reporting period includes students whom were enrolled in a given year during the summer, fall and/or spring semester. Students were reported at the level they were either (1) highest level degree attained, or (2) at the level at which they enrolled. For example, if a student's level (undergraduate or graduate) changes during the 12 month period, we counted the student at his/ her highest level enrolled. Incorporating this methodology makes it very difficult to report 12 month enrollment by program. This reporting methodology is consistent with IPEDS reporting. For more information about how 12 month, unduplicated enrollment numbers were configured, please consult the "IPEDS Data Collection: 12 Month Enrollment" report.

# 12 Month Enrollment.

---

Office of Institutional Research and Assessment

## 12 month Enrollment: Headcount

	2010-2011	2011-2012	2012-2013	2013-2014	3 year % Change
Undergraduate	53	49	83	90	70%
Graduate	174	159	212	230	32%
<b>Total Degree Seeking</b>	<b>227</b>	<b>208</b>	<b>295</b>	<b>320</b>	<b>41%</b>
ESL	16	15	23	41	156%
Exchange	19	25	54	36	89%
CERTBU	7	7	10	14	100%
NDS	11	14	22	19	73%
<b>Total NDS students</b>	<b>53</b>	<b>61</b>	<b>99</b>	<b>110</b>	<b>108%</b>
<b>Total Students</b>	<b>280</b>	<b>269</b>	<b>394</b>	<b>430</b>	<b>54%</b>

## 12 month Enrollment: Degree Level as a Percentage of Total Headcount

	2010-2011	2011-2012	2012-2013	2013-2014	3 year % Change
Undergraduate	19%	18%	21%	21%	11%
Graduate	62%	59%	54%	53%	-14%
<b>Total Degree Seeking</b>	<b>81%</b>	<b>77%</b>	<b>75%</b>	<b>74%</b>	<b>-8%</b>
ESL	6%	6%	6%	10%	67%
Exchange	7%	9%	14%	8%	23%
CERTBU	3%	3%	3%	3%	30%
NDS	4%	5%	6%	4%	12%
<b>Total NDS students</b>	<b>19%</b>	<b>23%</b>	<b>25%</b>	<b>26%</b>	<b>35%</b>

## 12 month Enrollment: Gender

	2010-2011		2011-2012		2012-2013		2013-2014		4 Year Average	
	Male	Female	Male	Female	Male	Female	Male	Female	Male	Female
Undergraduate	45%	55%	50%	50%	53%	47%	50%	50%	50%	51%
Graduate	53%	47%	55%	45%	54%	46%	53%	47%	54%	46%
Total Degree Seeking Students	52%	48%	54%	46%	54%	46%	52%	48%	53%	47%
Total NDS Students	40%	60%	34%	66%	40%	60%	45%	55%	40%	60%
Grand Total Student Population:	49%	51%	50%	50%	50%	50%	50%	50%	50%	50%

## 12 month Enrollment: Citizen Status

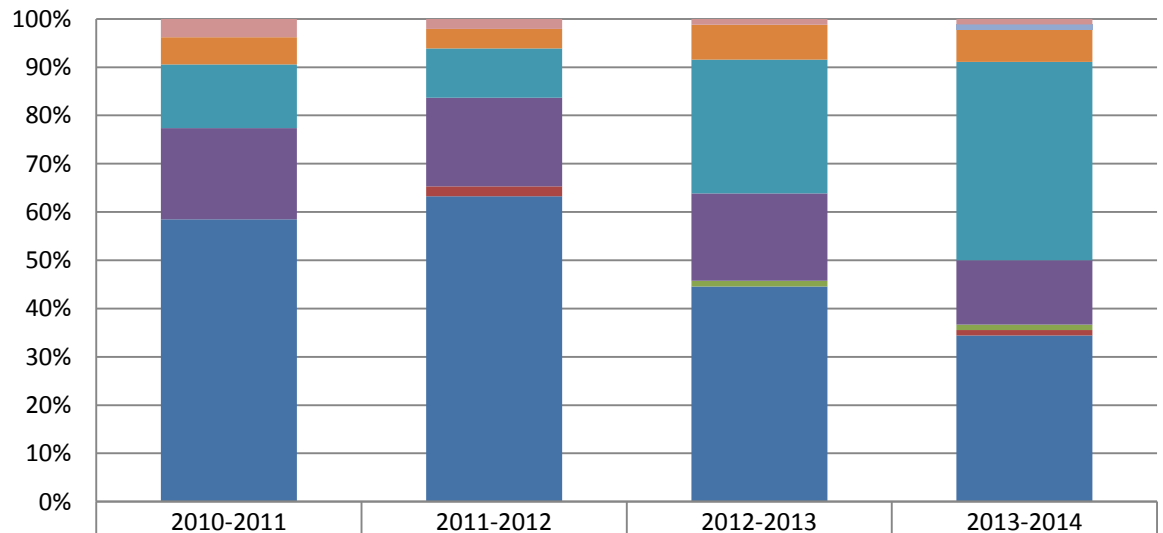
	2010-2011		2011-2012		2012-2013		2013-2014		4 Year Average	
	Domestic	International	Domestic	International	Domestic	International	Domestic	International	Domestic	International
Undergraduate	42%	58%	38%	62%	55%	45%	66%	34%	50%	50%
Graduate	52%	48%	61%	39%	56%	44%	52%	48%	55%	45%
Total Degree Seeking Students	50%	50%	55%	45%	56%	44%	56%	44%	54%	46%
Total NDS Students	13%	87%	21%	79%	14%	86%	18%	82%	17%	83%
Grand Total Student Population:	43%	57%	48%	52%	45%	55%	46%	54%	45%	55%

Note: 4 year average is a straight line average.

## 12 month Enrollment: Ethnicity

<b>Undergraduate</b>				
	<b>2010-2011</b>	<b>2011-2012</b>	<b>2012-2013</b>	<b>2013-2014</b>
<b>Non-resident Alien</b>	31	31	37	31
<b>Black, non-Hispanic</b>		1		1
<b>American Indian/Alaskan Native</b>			1	1
<b>Asian/Pacific Islander</b>	10	9	15	12
<b>Hispanic</b>	7	5	23	37
<b>White, non-Hispanic</b>	3	2	6	6
<b>Race and Ethnicity Unknown</b>				1
<b>Two or More Races</b>	2	1	1	1
<b>Total:</b>	53	49	83	90

## 12 Month unduplicated Headcount- Undergraduate Students



	<b>2010-2011</b>	<b>2011-2012</b>	<b>2012-2013</b>	<b>2013-2014</b>
Two or More Races	4%	2%	1%	1%
Race and Ethnicity Unknown	0%	0%	0%	1%
White, non-Hispanic	6%	4%	7%	7%
Hispanic	13%	10%	28%	41%
Asian/Pacific Islander	19%	18%	18%	13%
American Indian/Alaskan Native	0%	0%	1%	1%
Black, non-Hispanic	0%	2%	0%	1%
Non-resident Alien	58%	63%	45%	34%

<b>Graduate</b>				
	<b>2010-2011</b>	<b>2011-2012</b>	<b>2012-2013</b>	<b>2013-2014</b>
<b>Non-resident Alien</b>	83	62	94	111
<b>Black, non-Hispanic</b>	4	7	7	5
<b>American Indian/Alaskan Native</b>	1	1	1	2
<b>Asian/Pacific Islander</b>	51	47	54	60
<b>Hispanic</b>	5	6	10	10
<b>White, non-Hispanic</b>	29	34	43	39
<b>Race and Ethnicity Unknown</b>				
<b>Two or More Races</b>	1	2	3	3
<b>Total:</b>	174	159	212	230

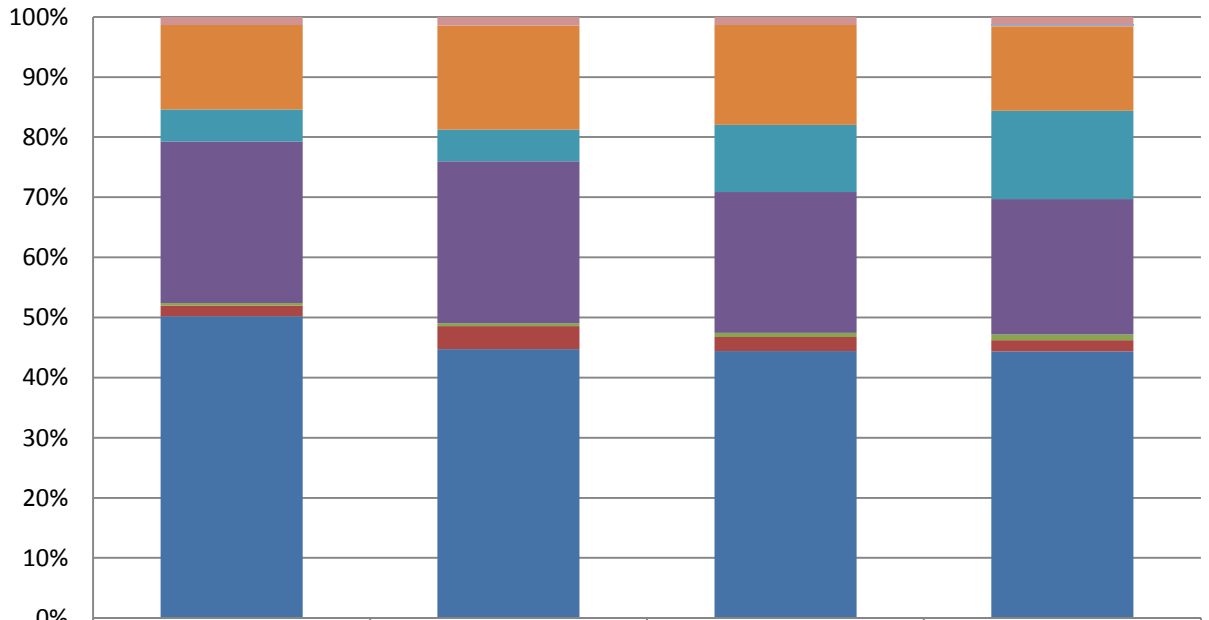
## 12 month unduplicated Headcount- Graduate Students



Two or More Races	1%	1%	1%	1%
Race and Ethnicity Unknown	0%	0%	0%	0%
White, non-Hispanic	17%	21%	20%	17%
Hispanic	3%	4%	5%	4%
Asian/Pacific Islander	29%	30%	25%	26%
American Indian/Alaskan Native	1%	1%	0%	1%
Black, non-Hispanic	2%	4%	3%	2%
Non-resident Alien	48%	39%	44%	48%

Total Degree Seeking Students				
	2010-2011	2011-2012	2012-2013	2013-2014
<b>Non-resident Alien</b>	114	93	131	142
<b>Black, non-Hispanic</b>	4	8	7	6
<b>American Indian/Alaskan Native</b>	1	1	2	3
<b>Asian/Pacific Islander</b>	61	56	69	72
<b>Hispanic</b>	12	11	33	47
<b>White, non-Hispanic</b>	32	36	49	45
<b>Race and Ethnicity Unknown</b>		0	0	1
<b>Two or More Races</b>	3	3	4	4
<b>Total:</b>	227	208	295	320

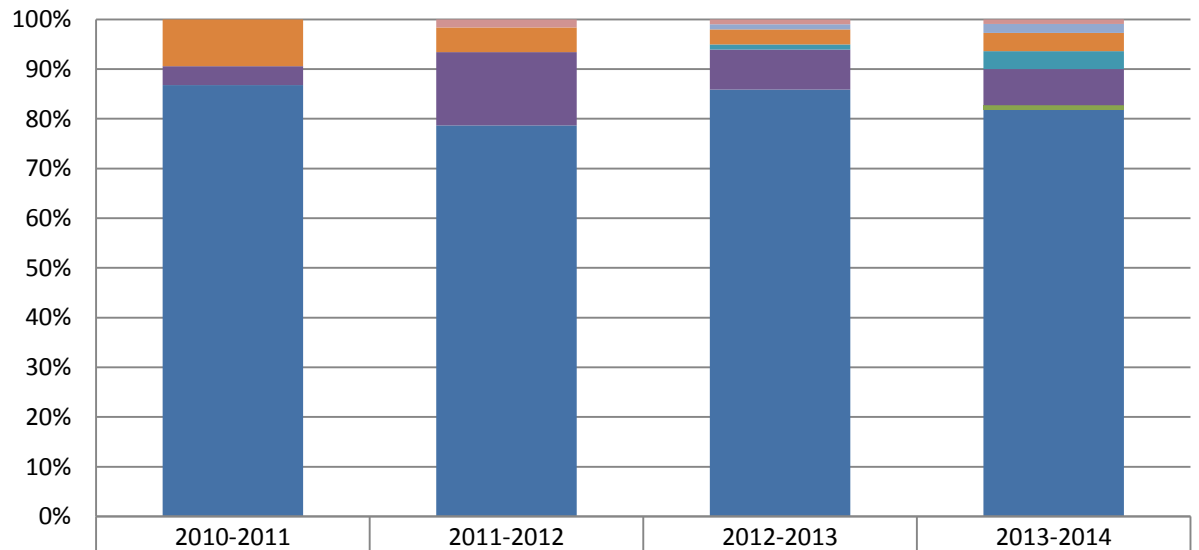
## 12 Month unduplicated Headcount- Total Degree-Seeking Students



	2010-2011	2011-2012	2012-2013	2013-2014
Two or More Races	1%	1%	1%	1%
Race and Ethnicity Unknown	0%	0%	0%	0%
White, non-Hispanic	14%	17%	17%	14%
Hispanic	5%	5%	11%	15%
Asian/Pacific Islander	27%	27%	23%	23%
American Indian/Alaskan Native	0%	0%	1%	1%
Black, non-Hispanic	2%	4%	2%	2%
Non-resident Alien	50%	45%	44%	44%

non-degree seeking students				
	2010-2011	2011-2012	2012-2013	2013-2014
<b>Non-resident Alien</b>	46	48	85	90
<b>Black, non-Hispanic</b>				
<b>American Indian/Alaskan Native</b>				1
<b>Asian/Pacific Islander</b>	2	9	8	8
<b>Hispanic</b>			1	4
<b>White, non-Hispanic</b>	5	3	3	4
<b>Race and Ethnicity Unknown</b>			1	2
<b>Two or More Races</b>		1	1	1
<b>Total:</b>	53	61	99	110

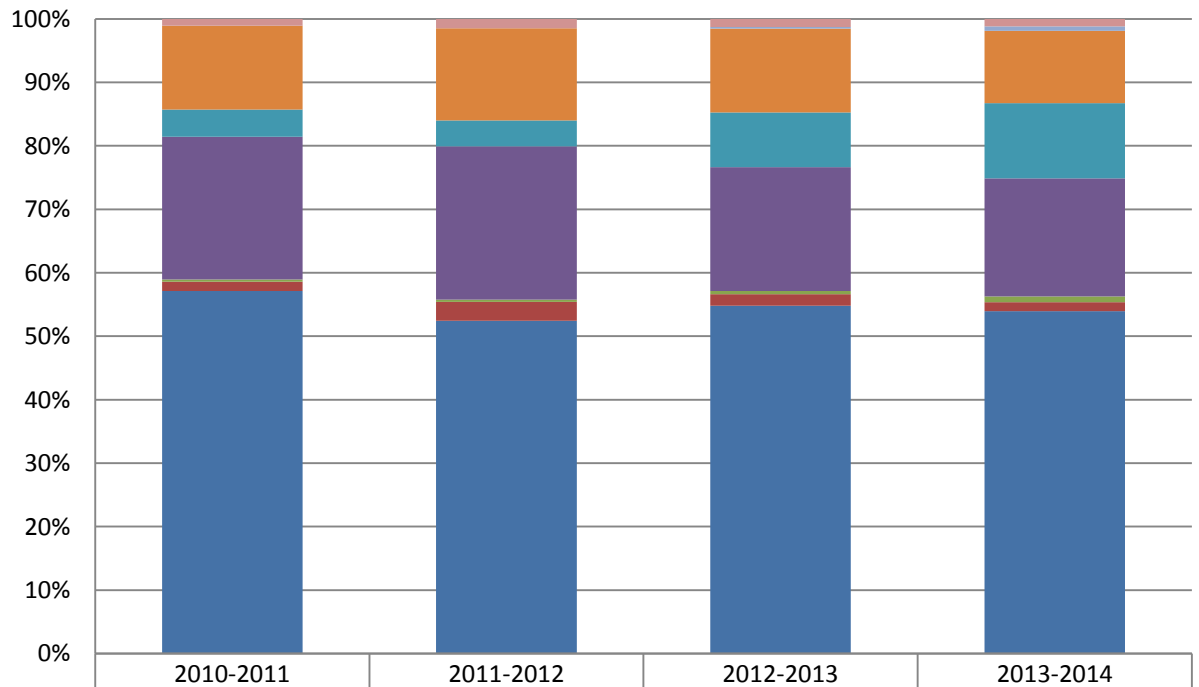
## 12 Month unduplicated Headcount- non-degree seeking Students



	2010-2011	2011-2012	2012-2013	2013-2014
<b>Total:</b>				
<b>Two or More Races</b>	0%	2%	1%	1%
<b>Race and Ethnicity Unknown</b>	0%	0%	1%	2%
<b>White, non-Hispanic</b>	9%	5%	3%	4%
<b>Hispanic</b>	0%	0%	1%	4%
<b>Asian/Pacific Islander</b>	4%	15%	8%	7%
<b>American Indian/Alaskan Native</b>	0%	0%	0%	1%
<b>Black, non-Hispanic</b>	0%	0%	0%	0%
<b>Non-resident Alien</b>	87%	79%	86%	82%

<b>Grand Total Student Body</b>				
	<b>2010-2011</b>	<b>2011-2012</b>	<b>2012-2013</b>	<b>2013-2014</b>
<b>Non-resident Alien</b>	160	141	216	232
<b>Black, non-Hispanic</b>	4	8	7	6
<b>American Indian/Alaskan Native</b>	1	1	2	4
<b>Asian/Pacific Islander</b>	63	65	77	80
<b>Hispanic</b>	12	11	34	51
<b>White, non-Hispanic</b>	37	39	52	49
<b>Race and Ethnicity Unknown</b>	0	0	1	3
<b>Two or More Races</b>	3	4	5	5
<b>Total:</b>	280	269	394	430

## 12 Month unduplicated Headcount- Grand Total Student Body



Two or More Races	1%	1%	1%	1%
Race and Ethnicity Unknown	0%	0%	0%	1%
White, non-Hispanic	13%	14%	13%	11%
Hispanic	4%	4%	9%	12%
Asian/Pacific Islander	23%	24%	20%	19%
American Indian/Alaskan Native	0%	0%	1%	1%
Black, non-Hispanic	1%	3%	2%	1%
Non-resident Alien	57%	52%	55%	54%